



ProtectED

R O O M S

SAFETY IN SECONDS



ProtectED Rooms

304 Gold Mill Trail, Canton, GA 30114

info@protectedrooms.com +1 (706) 662-0133

www.protectedrooms.com

The ProtectED Rooms Solution

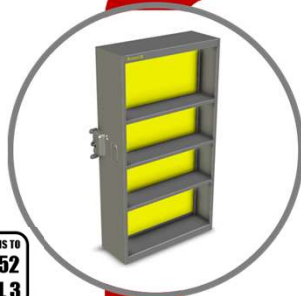
A safe room in seconds.



An Extraordinary Bookcase

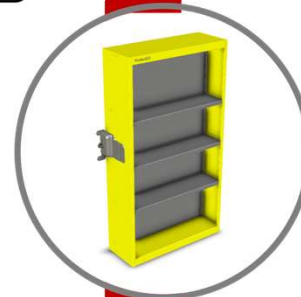
The ProtectED Rooms Bookcase is the only practical, easy-to-use, multi-level security solution that provides both physical and psychological security

CONFORMS TO
**UL 752
LEVEL 3**



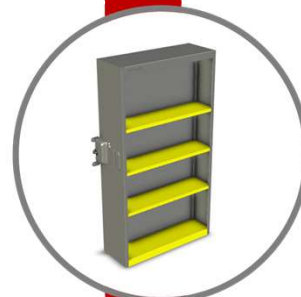
Protects

Bookcase forms a ballistic barrier and physical barricade over any entryway



De-escalates

Psychological deterrent aims to de-escalate violent situations and save *all* lives



Dual Use

Bookcase fulfills its normal function and never presents a militarized appearance

CERTIFICATIONS



304 Gold Mill Trail, Canton, GA 30114
info@protectedrooms.com +1 (706) 662-0133

www.protectedrooms.com

ProtectED
ROOMS

The ProtectED Rooms Team

Over 50 years of combined experience in crisis management and product design

Our Story

On April 16th, 2007, Master Sergeant (Ret.) Pete Facchini was serving as a Master Breacher of the U.S. Army's elite 75th Ranger Regiment when he learned of the Virginia Tech massacre. He knew he could apply his expert knowledge to develop a product capable of protecting innocent lives from even the most determined active shooter.

Pete enlisted the help of his childhood friend, Tim Cahalin and fellow Army veterans Jake Ahle and Tom Ankenbauer, and together, "Protecting Education" (ProtectED) was born.



Pete Facchini

Chief Executive Officer

- 20+ years SOF
- 75th Ranger Regiment Master Breacher
- 20 combat deployments
- 3 Bronze Stars with "V" for Valor



Tim Cahalin

Chief Product Officer

- UC Berkeley '99
- Years of experience in architectural design and custom furniture fabrication



Jake Ahle

Chief Operations Officer

- Penn State '13
- Harvard MBA '22
- 7+ years US Army Infantry Officer



Tom Ankenbauer

Chief Financial Officer

- USMA '13
- MIT Sloan MBA '22
- 8+ years US Army Infantry Officer

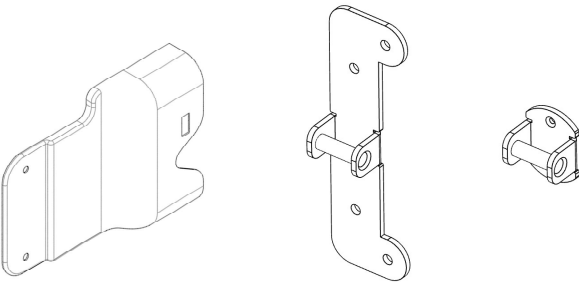
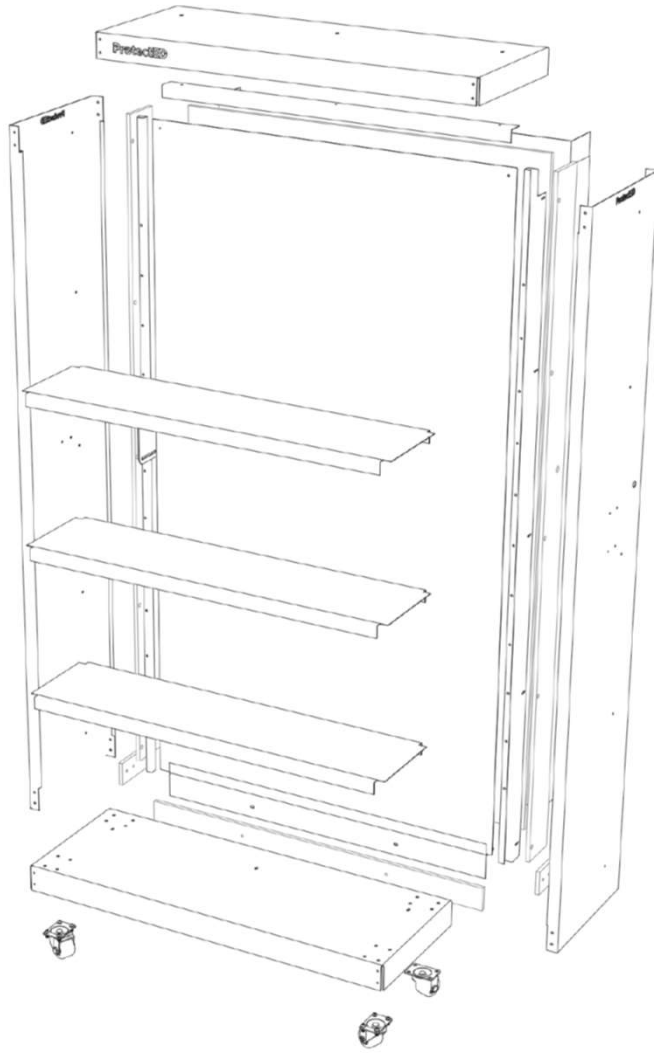
304 Gold Mill Trail, Canton, GA 30114
info@protectedrooms.com +1 (706) 662-0133

www.protectedrooms.com

ProtectED
ROOMS

ProtectED Rooms Bookcase

Technical Data Sheet



Product Dimensions

Bookcase can be customized to fit customer requirements.

- Height 88" (224 cm)
- Width 56.7" (144 cm)
 - Width of protected space / area 46"
 - Bracket to bracket (outer edges) 55.4"
 - Bracket to center line (outer edge) 27.7"
- Depth 18" (46 cm)
- Weight 504 lb (228 kg)

Maximum Entryway Coverage Dimensions

Bookcase can be customized to fit customer requirements.

- Max Height 85" (216 cm)
- Max Width 45" (114 cm)
- Max Door Handle Protrusion 5.3" (13.5 cm)

Certifications

- Loading and stability certified (BIFMA X5.9¹)
- Ballistically rated to stop up to 44 Magnum bullets (UL752 Level 3²) - can be customized to higher or lower ratings

Features

- Ballistic Barrier
 - Bullet-resistant fiberglass panel
 - Level 3 (UL 752) Ballistic Resistance
 - Level IIIA (NIJ 0108.01) Ballistic Resistance
 - Class 4 Forced Entry Protection (ASTM F1233-98)
 - 1-Hour Fire Rating (ASTM E119-98)
 - Low wicking (no build up of mold)
- Physical Barricade
 - Double rotary latches, rated to withstand 4,500 lbs
 - Casters - 360° swivel, rated for 400 lbs each
- Psychological Deterrent
 - 48" x 36" polycarbon mirror
- Release Mechanisms
 - Classroom-side – simple push-down level
 - Hallway-side – keyed cylinder lock allows release by authorized personnel (e.g., police, administrators)

Wall Brackets

- Door Position (Active) Brackets
 - 4" x 13"; 4 x bolts
- Wall Position (Resting) Bracket
 - 3.5" diameter; 2 x bolts
- Anchoring Bolts
 - CMU chemical anchors, rated to withstand 3,300 lbs of force³

Notes

¹ BIFMA X5.9 testing covers 4.2 concentrated functional load test, 4.3 distributed functional load test, 4.4 concentrated proof load test, 9.2 horizontal force stability test, 9.6 vertical force stability test, 10.2 storage unit drop test

² Provides protection against complete penetration, passage of fragments of projectiles (up to three shots of a 240-grain 44 Magnum Lead Semi-Wadcutter Gas Checked at an fps between 1350 and 1485), or spalling (fragmentation) of the protective material to the degree that injury would be caused to a person standing directly behind the bullet resistant barrier

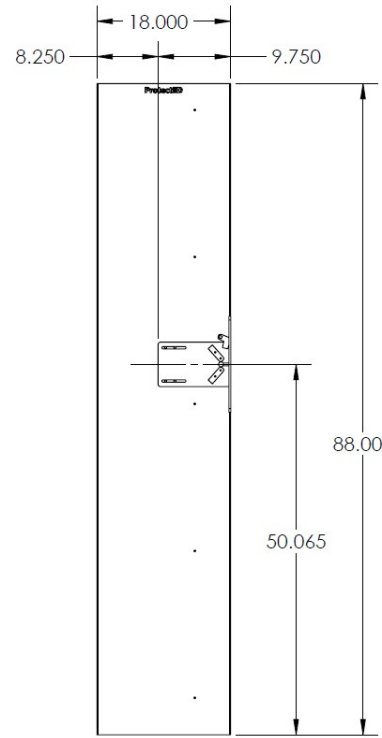
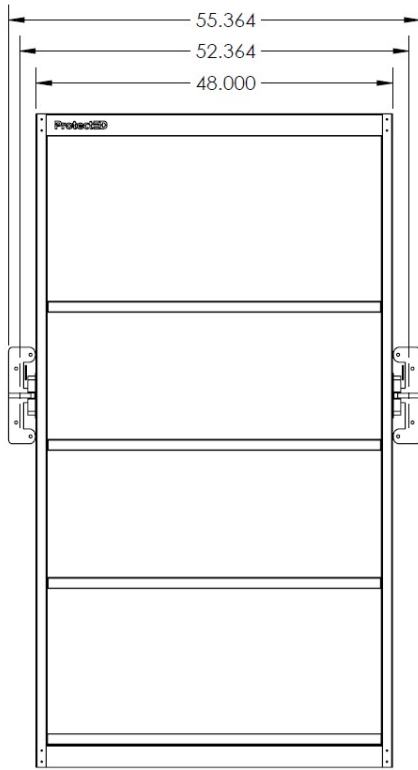
³ Allowable tension load. Ultimate tension load capacity is 13,200 lbs of force

ProtectED Rooms Bookcase

Technical Data Sheet

Front and Side Dimensions

Can be customized.



Powder Coated Finish

190+ colors available.

Examples:



RAL 1001
Beige



RAL 7004
Single Grey



RAL 6006
Grey Olive



RAL 5002
Leaf Green



RAL 4004
Claret Violet



RAL 8003
Clay Brown

Veneer Finish

10+ finishes available.

Examples:



Sapelli 1002



Walnut 1012



Mahogany 1070



Beech 1031



Oak 1053



Ash 1090